

OINTMENT MFG PLANT

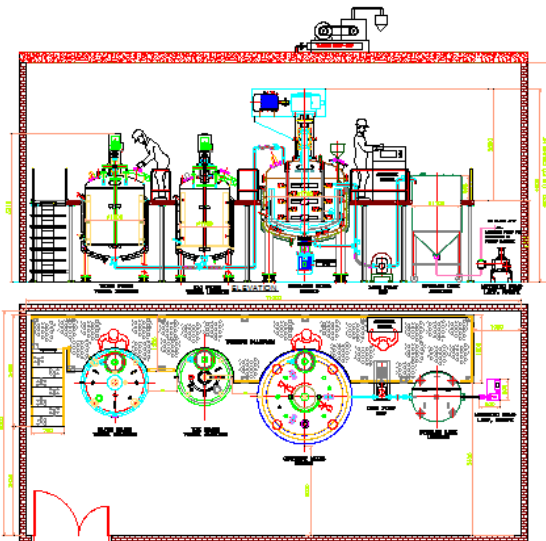


Automatic Ointment/ Cream Mfg. Plant



SALIENT FEATURE:

- * Ointment plant mainly consist of Wax phase, Water phase, Batch mixer, Storage Tank, Transfer pump & Working platform.
- * Heating / cooling and insulated jackets complete with temperature control and safety equipment.
- * Contra rotary & Semi Contra Rotary agitator with removable Teflon scraper.
- * Product Re-Circulation through bottom entry or inline high speed Homogenizer.
- * Hydraulic lifting on manufacturing vessel top dish to facilitate product recovery & proper cleaning.
- * Separate pre-mix vessels for wax and water phase
- * Vacuum generation system for Main batch mixer for product charging & deliration.
- * Interconnected process piping with transfer pump, filters & sanitary design valves & fitting
- * Effective inbuilt CIP system.
- * PLC based control panel for easy operations.
- * Load cell mounting for online weighing.
- * Capacity 5 to 3000 kg



Alphatech
Engineers

Automation moving towards technology

ALPHATECH ENGINEERS

Unit no-H2, Buld no-2B, Sagar Industrial Estate, Dhumal Nagar, Waliv, Vasai East.

Phone- +91 9930469880 Email- info@alphatecheng.com eng.alphatech@gmail.com

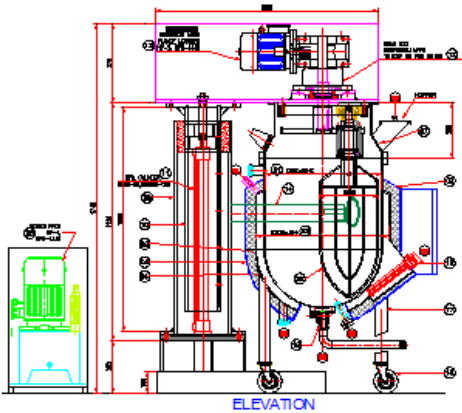
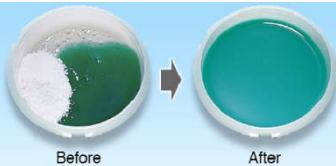
Website : www.alphatecheng.com

PLANETARY MIXER

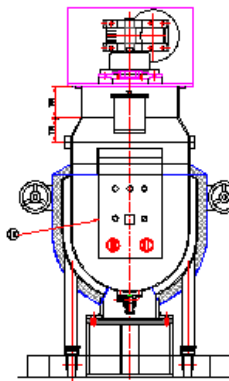


Fast Uniform Mixing

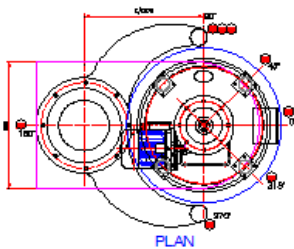
Completely Uniform Mixing, Dispersal, and Deaeration in minutes!



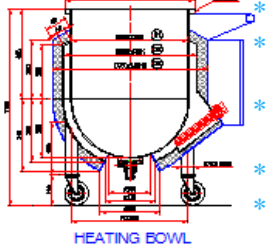
ELEVATION



FRONT VIEW



PLAN



HEATING BOWL

SALIENT FEATURE:

- * Product bowl mounted on castor wheels for easy portability, washing & transporting mixed materials.
- * Jacketed bowls available for heating or cooling of products during mixing
- * Provision to mix materials under vacuum for duration purpose.
- * Double beater open type to cover full cross section of products in bowl.
- * Scraper of suitable design to avoid localized heating or cooling & ensure uniform mixing.
- * Flameproof construction optional
- * Motorized and Hydraulic drive assembly for lifting and lowering.
- * Needs comparatively smaller area for installation.
- * Contact parts in SS 316/SS316L.
- * **Models:** 120L, 200L, 350L, 500L, 650L, 800L (1000 L. to 1500 L. on request)

Alphatech
Engineers

Automation moving towards technology

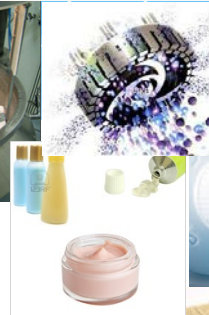
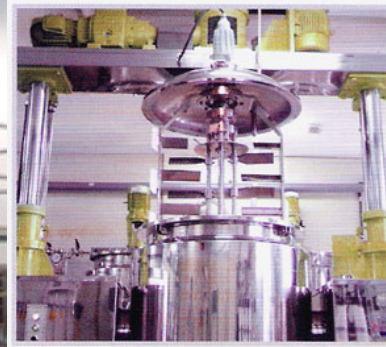
ALPHATECH ENGINEERS

Unit no-H2, Buld no-2B, Sagar Industrial Estate, Dhumal Nagar, Waliv, Vasai East.

Phone- +91 9930469880 Email- info@alphatecheng.com eng.alphatech@gmail.com

Website : www.alphatecheng.com

MULTIPURPOSE MIXERS



SALIENT FEATURE:

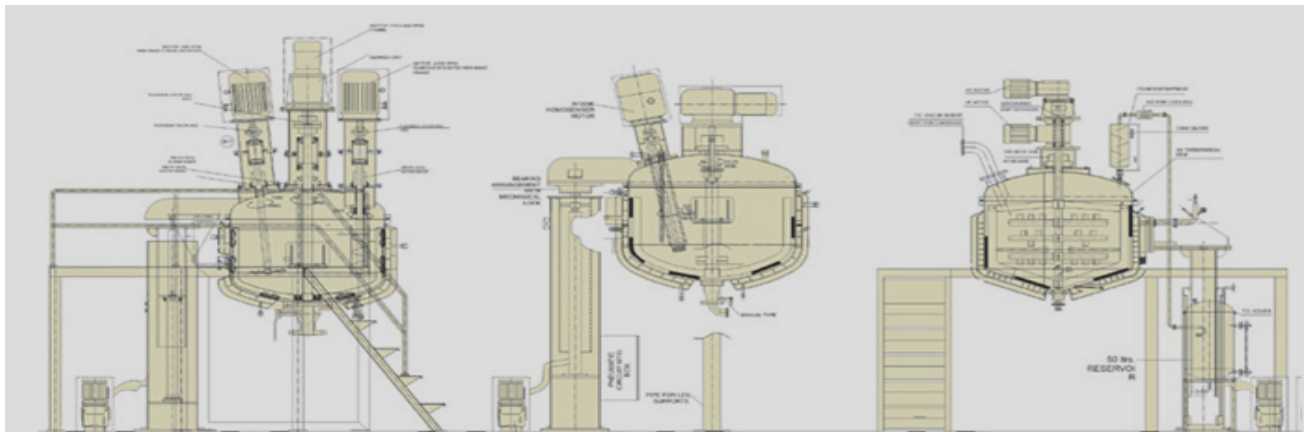
- * Especially semi-contra & Double contra designed anchor stirrer with flexible Teflon scrapers
- * Also provided with a slow speed anchor agitator for mixing and a bottom high speed homogenizer for emulsifying.
- * Variable speed drive provided for all stirrer assembly for different speeds
- * Complete cover lifting arrangement to facilitate cleaning at the time of product change.
- * Jacketed vessels for heating/cooling processes.
- * Inspection glass with illumination.
- * The Mixer has provision to mix materials under vacuum for deaeration purpose.
- * Flameproof construction optional
- * All pipelines are electro polished from inside and joints are easy open able
- * Contact parts in SS 316/SS316L.
- * Optional Requirement are a. Load cell for accurate weighing. b. PLC based control panel for process automation.
- * **Models:** 50kg, 100Kg, 200Kg, 300Kg, 500Kg, 1000Kg (Above 1000Kg on request)

APPLICATIONS:

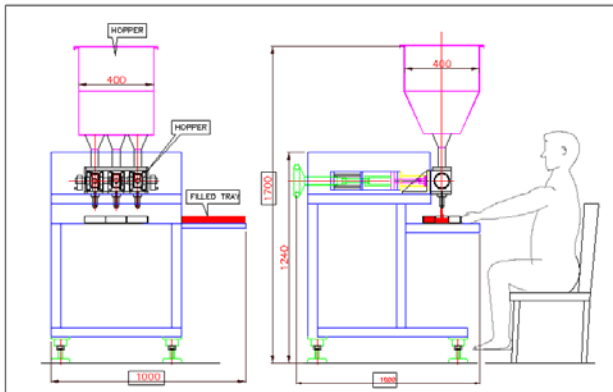
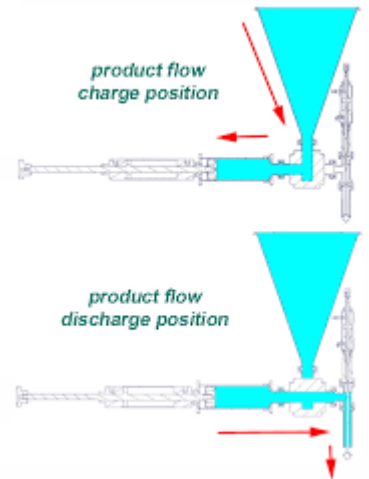
- A. Pharmaceutical industry
- B. Chemical industry
- C. Cosmetics industry
- D. Food industry
- E. Paint industry

Multi purpose mixer mainly use-

1. Ointment, Cream & Lotion, Shampoo, Hand wash & Mouth wash, Tooth paste, Gelatin cooking,
2. Tomato Ketchup, Mayonnaise sauces manufacturing.
3. Grease & Oil Manufacturing plant
4. Grease & Oil Manufacturing plant
5. Paint mixing.



AUTOMATIC PISTON FILLING MACHINE



A simple and sturdy semi-automatic container filling machine for filling cream, paste, ointment, wax polish, grease, jam, sauce etc. in plastic or tin containers or jars, bottles etc.

Containers like flat tins, bottles are to be manually placed under the filling nozzles. No-Container-No-Fill device will stop the machine if container is not in place. SS jacketed hopper with 2 kw heater and stirrer can be provided as an option to facilitate easy filling of highly viscous products. Filled containers are to be manually removed from machine and replaced with next empty container. Compressed Air Requirement: 2 CFM at 6 bar pressure.

FEATURES:

- * Can fill creams of various viscosity
- * No –Container – No – Fill interlock
- * Tail Cutting arrangement after dozing
- * Easy change over from one size to another
- * Fill quantity can be accurately adjusted
- * Fill accuracy up to $\pm 0.5\%$
- * Simple in operation and maintenance

| MODEL | HEAD | FILL VOL | OUTPUT |
|--------|---------|-------------|------------------|
| ALF-1 | 1- Head | 5 to 500 ml | 10 to 15 per min |
| ALF-2 | 2- Head | 5 to 500 ml | 20 to 30 per min |
| ALF--3 | 3- Head | 5 to 500 ml | 30 to 45 per min |
| ALF-4 | 4-Head | 5 to 500ml | 40 to 60 per min |